

# CORNERSTONE

the ultimate building system

“Beating all the elements!”

- **Against hot & cold temperatures**
- **Earthquake, wind & cyclonic conditions**



**Cornerstone Promotional  
Presentation**

## *Another KIWI invention..*



**The idea!!**

The 10 year old, patented Cornerstone polystyrene building system was born in Oxford, North Canterbury, New Zealand. Mary Ginn is the only remaining of the 3 inventors, and driving force bringing the system through to fruition.

**Mary's 20 years in the building industry, from building, designing, stopping, painting, decorating, developing, & project management, has given her the background to carry out the task.**

The idea was the easy part of the equation. Patenting, BRANZ testing, designing details, propping systems, tools required, manufacturing & the equipment, constructing, training, marketing, systemising & Licencing like many other great kiwi ideas on a shoestring.....

**Mary's down to earth approach is to keep it simple, so she has perfected the system, to allow speedy erection of 4 building processes in 1, and rather than compromising quality, the system adds value!!!**





# What is the Cornerstone system?

- ✓ Based on the solid polystyrene panel, 200- 250mm thick, 1.2 x stud height, usually but not always 2.4m.
- ✓ Panels joined together leaving cavities for reinforced concrete posts and continuous bond beam.
- ✓ When the concrete is poured into the cavities it adheres to the polystyrene, making an integral unit, the polystyrene protecting the concrete and absorbing any shock from earthquake or wind.
- ✓ Steel connects foundation through to roof structure forming a cyclone tie.



**Panels are LARGE & LIGHT, covering large areas of wall quickly & efficiently.**

NZ Patent  
No. 297909



*Cornerstone House*  
Sectioned View



**Cross sectional view**





"BEATING THE ELEMENTS"

Yes! Beating the elements....

# The system benefits are many!

- High Bracing Earthquake & Wind- 2-3 times higher than timber with angle brace.



- Energy & cost efficient- R value of 4.3 for 200mm and 5.75 for 250mm thick wall. Huge savings in heating installation and ongoing power bills. NZ Homes at present regulations do not meet the WHS.



- Rapid construction- Lockup shell sooner along with progress payments, 4 processes completed at once, and time is money.





# Benefits continued...

- *Fire Safety*- BRANZ testing provide excellent results in fire.... Cornerstone Building system has very good fire ratings.
- *Environmentally friendly*- Polystyrene is CFC & HCFC free in all stages of manufacture.
- *No Rot*- The system does not have anything that will break down. The minor amount of timber to fix windows to has always been H3 treated, & for the rest concrete and polystyrene. Comforting news these day.



# Good preparation makes the job flow...



**Props & battens have been set out....**



A





## Panel into place

**Line panel up with the previous panel.**

**Panels go together like a jigsaw puzzle....**



# Window Lintle in place



**H3 timber frame around the window allows standard fixing for builder...**



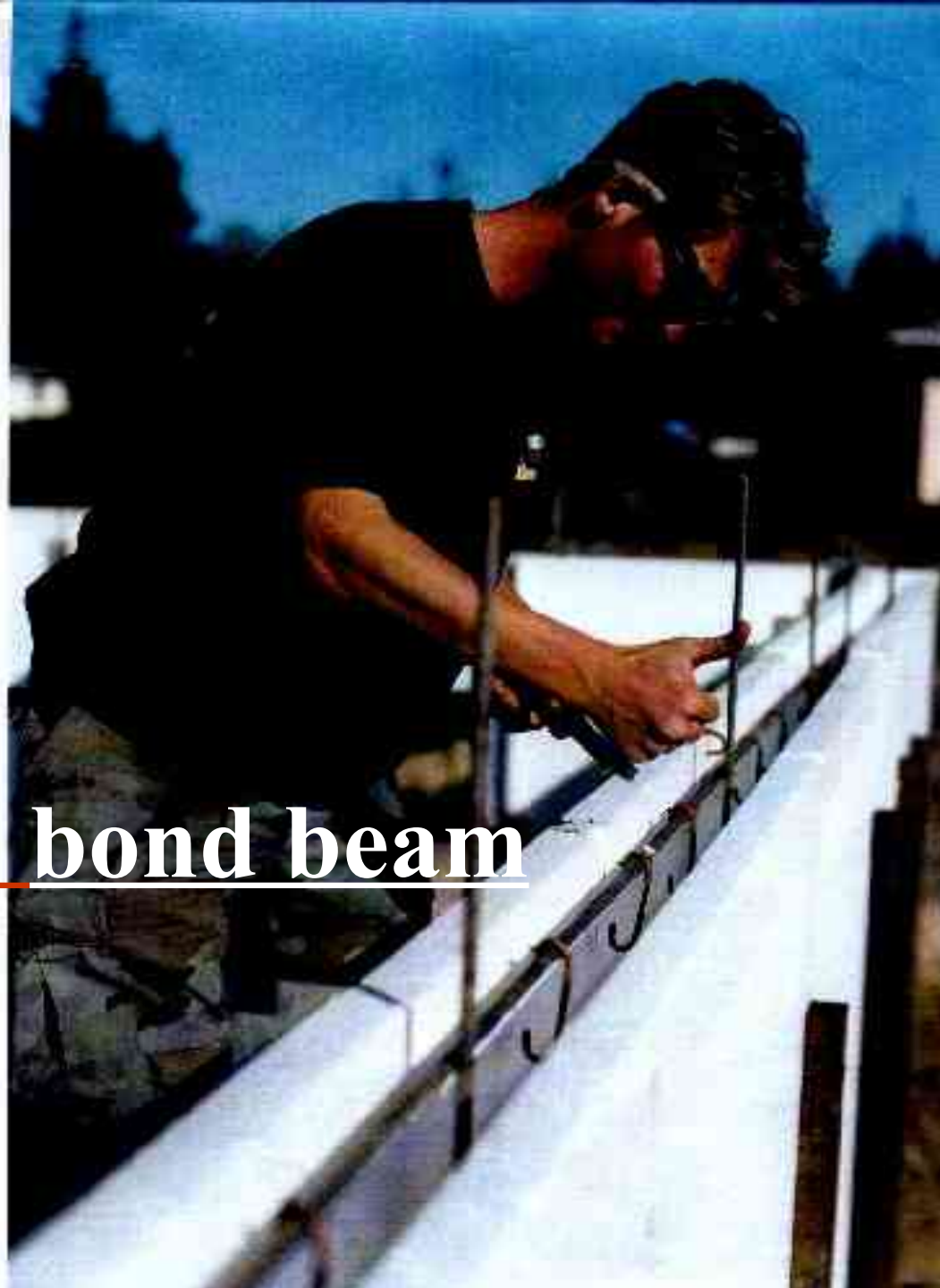
# Tying steel in beam.

Simply tie the top horizontal rod of steel.





## Stirups to bond beam



# Concrete Pour

These guys are going for it .....





# Large project concrete pour..



Minimal amount of concrete allow for bucket application even on the larger projects,,,



## Screeding off...

- Smooth finish to the concrete bond beam ready for the top plate.



## Top plate over steel rods



*These guys still have the energy to place this after bucketing concrete, they sure breed 'em tough in the south island..... they can sure motor through the project..... & they know time is money!*

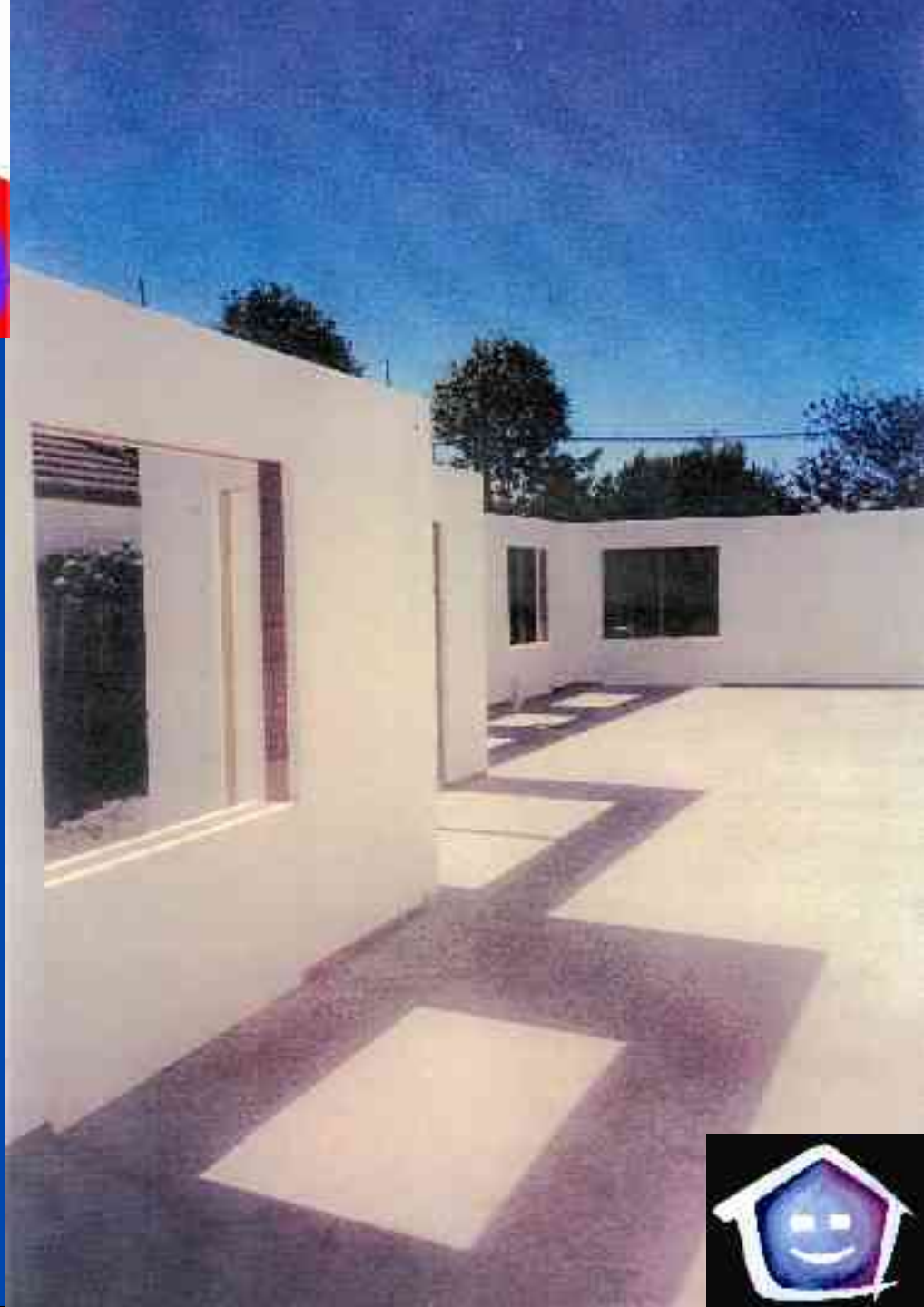






## Props cleared.....

**All cleaned up  
ready for the  
internal walls to  
go into place.**





## Internal wall

**Internal walls butt up to the external Cornerstone wall**





Roof Framing over top plate.....

# Claddings – Texture Coating



# Claddings -solid plaster



# Claddings-Brick veneer





# Claddings – Timber.



# Claddings – Cultured Stone



**Central portion Vaulted over 2 floors 6.9m stud. Yes...the natural stone effect over polystyrene, you can't tell that is not the real thing.....**





# Claddings – Mixture of corrugated iron, shiplap, & plaster.





## Photo Gallery

Entry level homes in  
Hamilton above



Oxford North Canturbury  
right.

3 units on 1<sup>st</sup> floor and 4  
below.





Photo Gallery  
Continued.

- Curved Walls
- Concrete & timber mid-floors
- & fences....



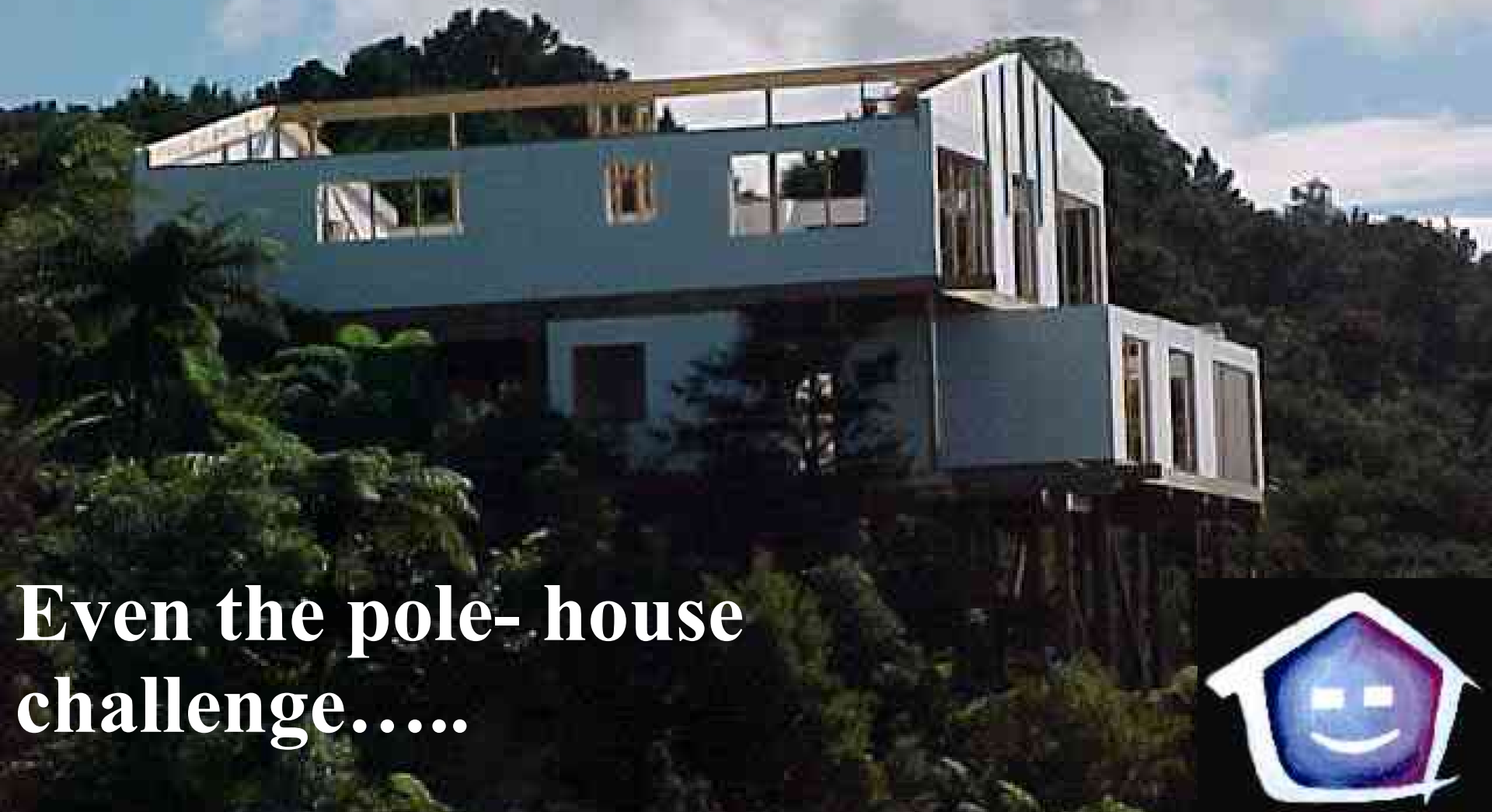


Fences in Cornerstone blend beautifully with this elegant Panmure project in Auckland .



Photo Gallery  
Continued.

Photo Gallery Continued



**Even the pole- house  
challenge.....**



# Photo Gallery Continued



**Timber floors work better  
for this sloping site....**



# Photo Gallery Continued



**Taupo builders home..**



Photo Gallery  
Continued



Hebel power panel (Airated concrete) mid-floor to this Ashburton project.







Photo Gallery Continued



Photo Gallery Continued.



These 2 houses sold before completion in Halswell, Christchurch.



Photo Gallery Continued.



**Standard brick construction...over the polystyrene this adds to the energy efficiency as well as the sound benefits.**





Photo Gallery  
Continued.

# Photo Gallery Continued.



**Development with view to harbor...**

Photo Gallery Continued.

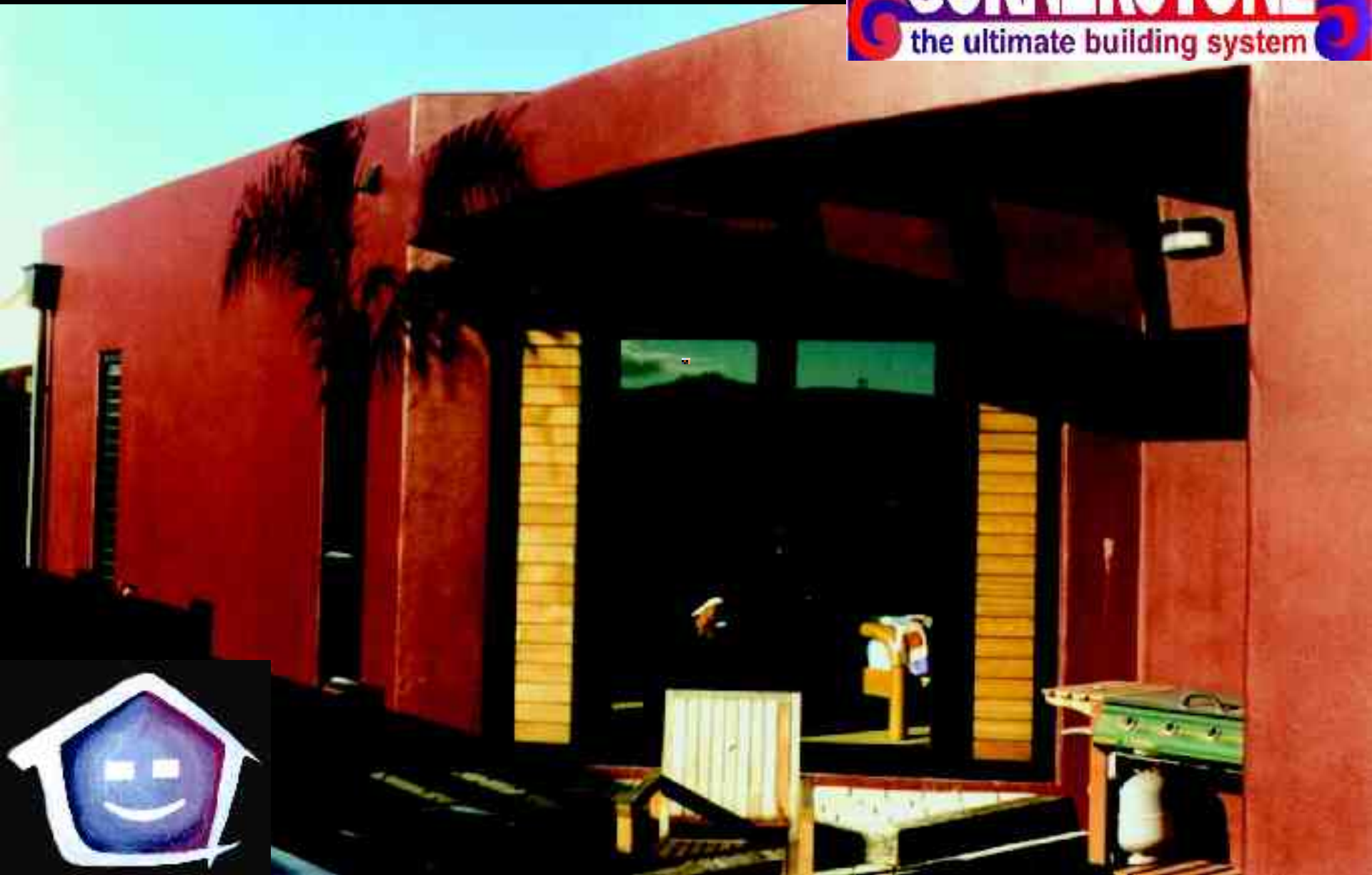




Photo Gallery Continued.





This Cornerstone house in Taupo, performs very well, where extremes of temperature prevail, along with the high winds.





## Photo Gallery Continued.



Commercial buildings such as the Apostolic Training Centre (ATC) in Hamilton lend well to the Cornerstone Building system.

Additions to the development under way





## Photo Gallery Continued.



This Templeton home outside Christchurch functions very well with a curved wall to the Northern outlook.





Ben Lomond Station Lodge, slab  
down....about to be extended



# Cnr Jamison Ave & Knowles St, St Albans





# Brook St, Southbridge





Main Rd, Kaikoura

**CORNERSTONE**  
the ultimate building system





# The Elms, Prebbleton







Cavenish St, Ashburton





# Farm house, Ashburton



**CORNERSTONE**  
the ultimate building system



Jacks Pass Rd, Hanmer





# Taupo





Stone St  
Wanaka



Argalines Rd, Hanmer.  
Midland brick





Acacia Bay Rd, Taupo.



# Taupo







The first Cornerstone project with firewalls to the boundary.



**Why build any other way???**

**Cornerstone building system adds value....  
over & over again!!!**

***Let's STOP THE ROT....give our clients the  
ULTIMATE building system.***

***www.4-cornerstone.com***

**0800 4 CORNERSTONE**

**0800 426 763**

